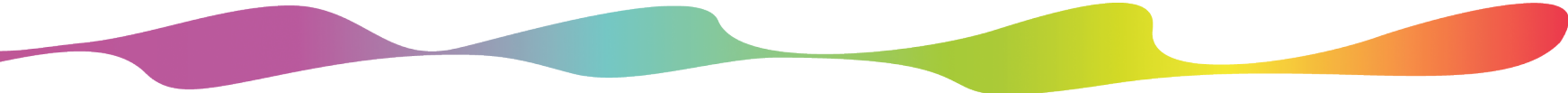


EFI™ Fiery® eXpress 4.6
Installation Guide



Fiery Wide Format Team
September 2016



Purpose of the guide



This is a quick overview of Fiery eXpress 4.6 and how to upgrade

- Please refer to the Quick Start Guide and documentation for a more detailed explanation
- Please make sure you have a license for Fiery eXpress 4.6 before starting the installation procedure

Content



- What's new?
- Upgrading from a previous version
- New installation
- Activate Fiery eXpress 4.6
- Restore your backup
- Downloading profiles online
- Downloading Canon Media Profiles
- Questions?

What's new?



What's new in Fiery eXpress 4.6



- A single Fiery eXpress
 - Fiery eXpress for Photo, Proofing and Proofing Advanced products are replaced by a single product
 - Users buying a full version or an upgrade, now benefit from the complete toolset of all three previous offerings
 - Two sizes
 - Fiery eXpress 4.6 Small: up to 18"/A2
 - Fiery eXpress 4.6 Large: 24" and larger

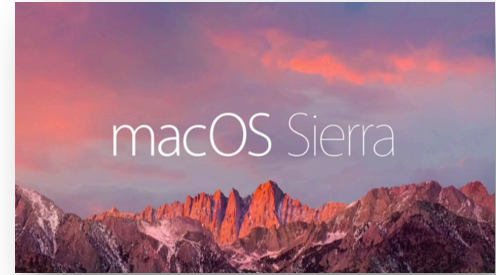
What's new in EFI Fiery eXpress 4.6



- And
 - Support for the latest ISO 12647-2:2003 reference profiles
 - Updated verification presets for proof validation in compliance with ISO/DIS 12647-7:2016
 - Support for the latest PANTONE® spot color libraries
 - Support for the EFI ES-2000 and X-Rite i1Pro 2 spectrophotometers
 - 14 new printer drivers for EPSON and Canon devices
 - Mac OS X 10.11, 10.12 and Microsoft® Windows® 10 support
- See release notes for more details: www.efi.com/fieryexpress

Minimum system requirements

- Hardware requirements
 - Microsoft® Windows® 2 GHz Pentium IV PC or Macintosh with Intel CPU
 - 2 GB Ram (4 GB recommended)
 - 10/100 Mbit Network,
 - 1 available USB port
- Operating system requirements
 - Microsoft® Windows® 7, 8, 8.1 and 10
 - Mac OS X 10.9, 10.10, 10.11, 10.12

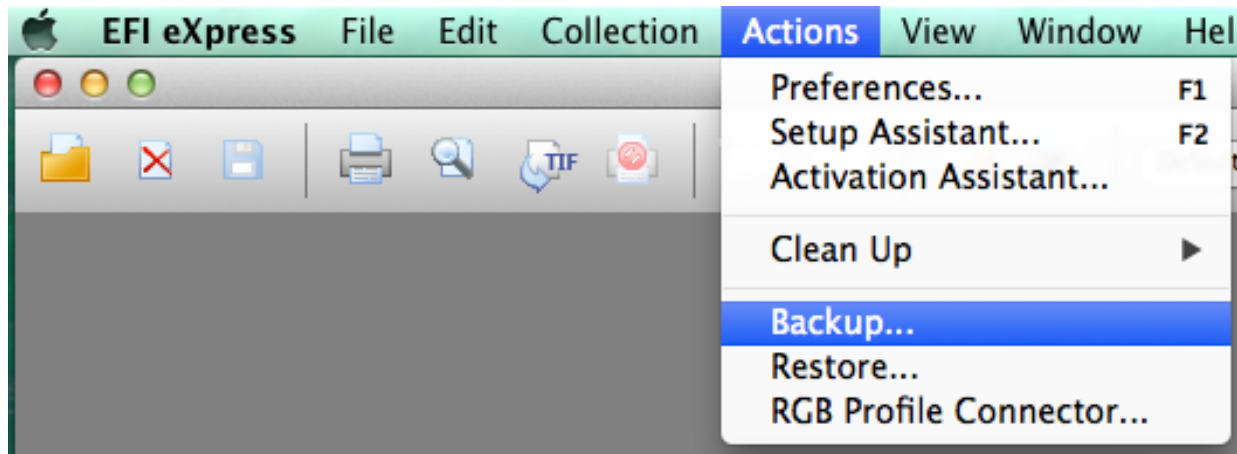


Upgrading from a previous version



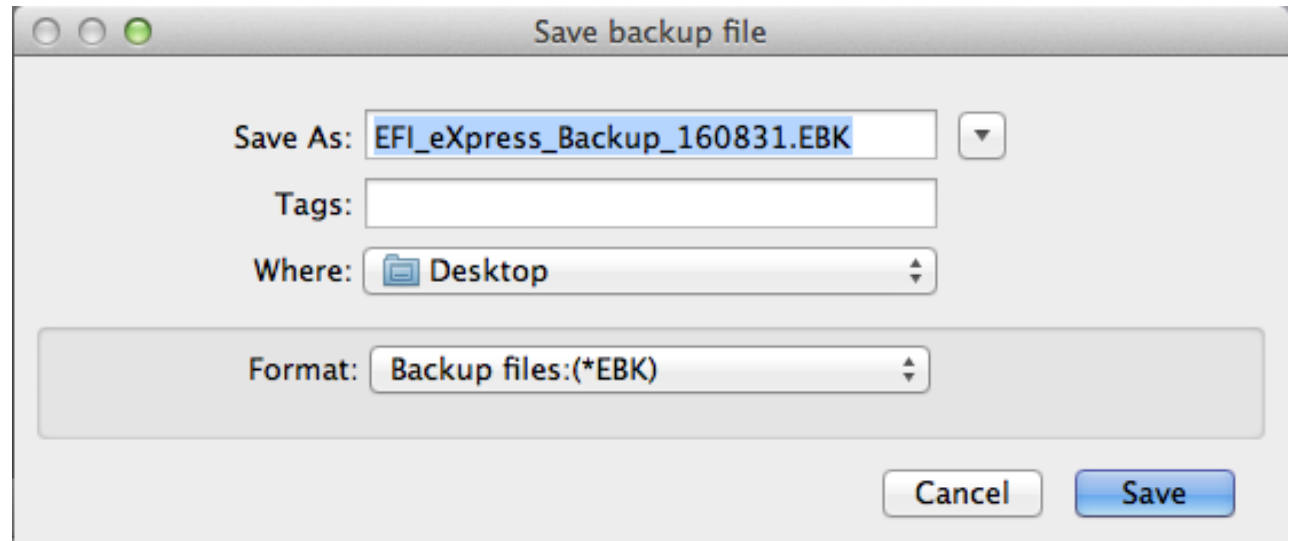
Create a backup

- Go to **Actions** menu > select *Backup*



Create a backup

- Save the backup file in your desired location



Uninstall the current version



- Insert the DVD
- Or go to our [Download Center](#) to search for the installer of the version you have currently installed

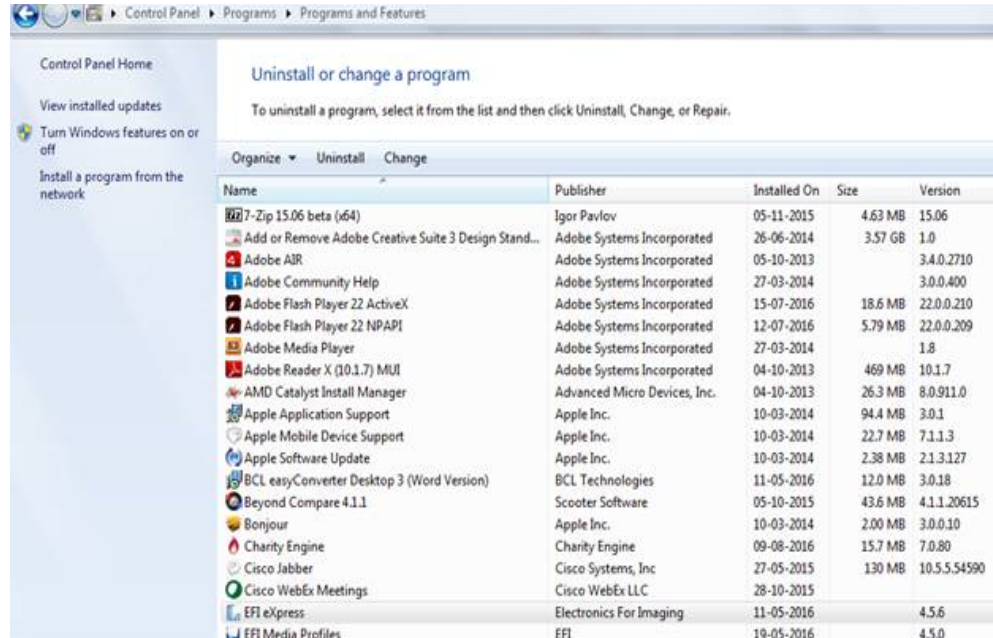
Uninstall the current version



- You need the following installers:
 - 4.5 to uninstall 4.5 - 4.5.2
 - 4.5.3 to uninstall 4.5 - 4.5.6
 - 4.1 to uninstall 4.1 - 4.1.2
 - 4.1.3 to uninstall 4.1 - 4.1.4
 - 3.5 to uninstall and 3.5 - 3.5.2

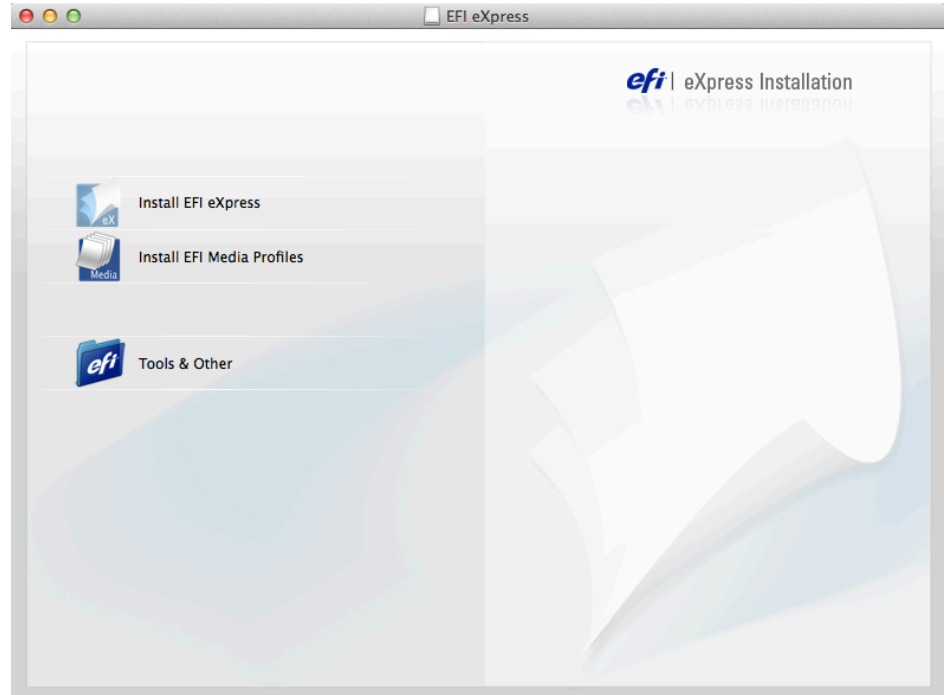
Uninstall the current version - Win

- Go to Control Panel > Programs > Programs and Features
- Select EFI eXpress
- Select Uninstall
- Follow the steps until the program is successfully uninstalled.



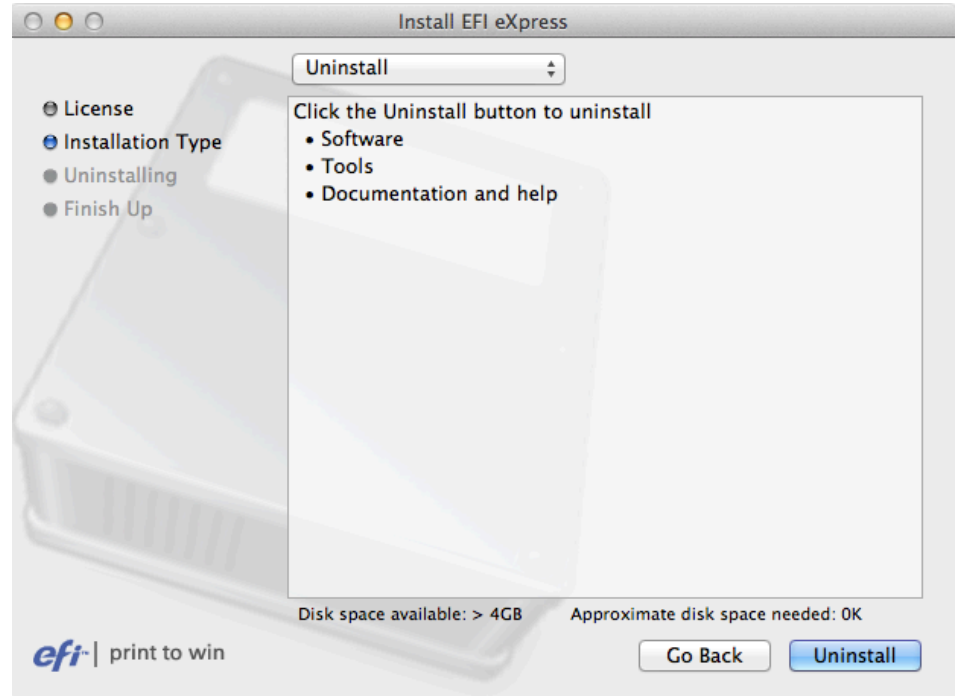
Uninstall the current version - Mac

- Double-click “Install EFI eXpress”



Uninstall the current version - Mac

- Follow the steps until you get to the “Installation Type”
- Choose “Uninstall” in the dropdown list
- Click the “Uninstall” button until you get the message that the software is successfully uninstalled



Proceed with the steps as described in the next sections
New installation and Activate Fiery eXpress

+

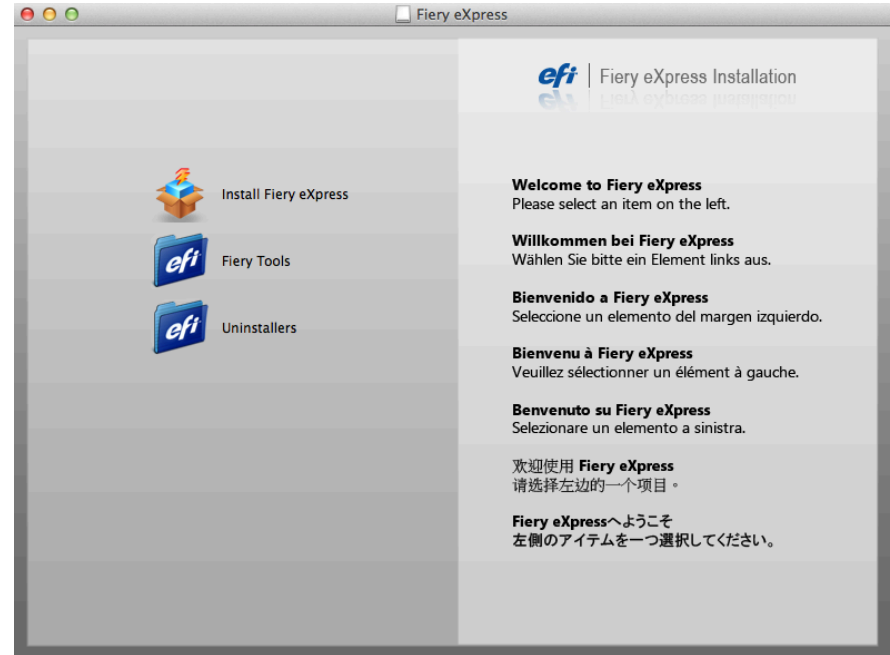
Restore your backup afterwards
Update your profiles online

New installation



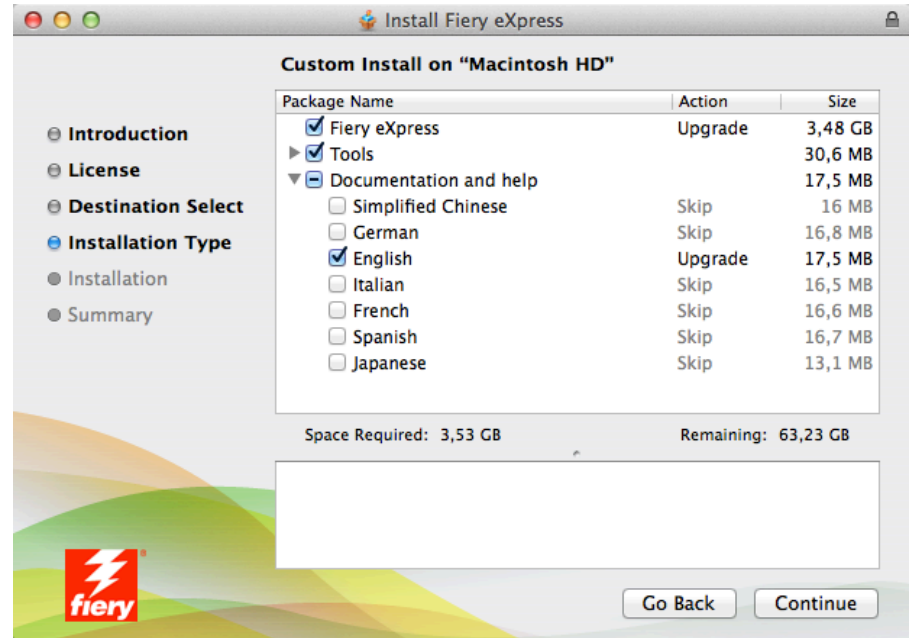
Install Fiery eXpress 4.6

- Insert the DVD or download the installer through [this link](#)
- Double-click “Install Fiery eXpress” and follow the instructions



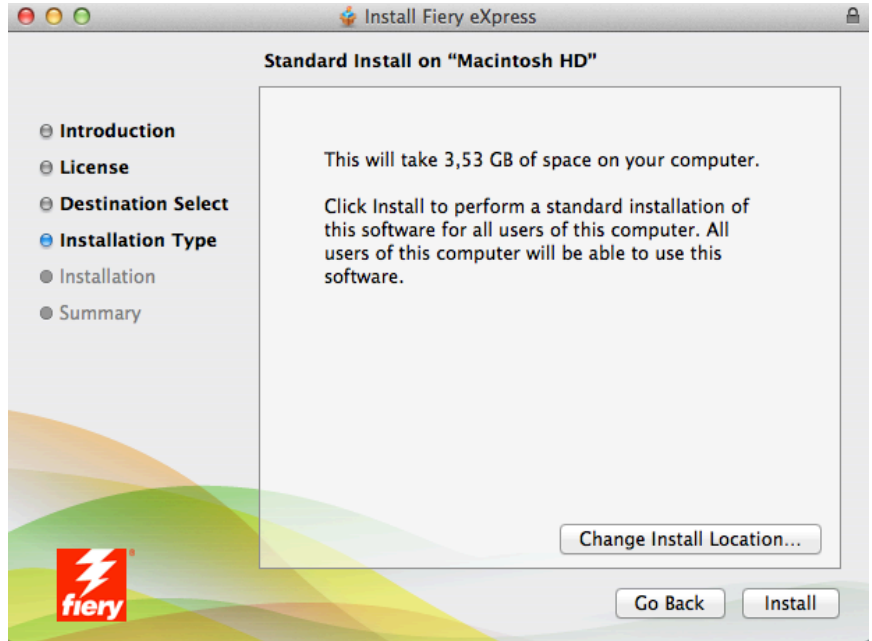
Install Fiery eXpress 4.6

- Follow the steps until you get to the “Installation Type”
- Choose the package you would like to install
- Click “Continue”



Install Fiery eXpress 4.6

- Follow the instructions until you get the message that the software is successfully installed



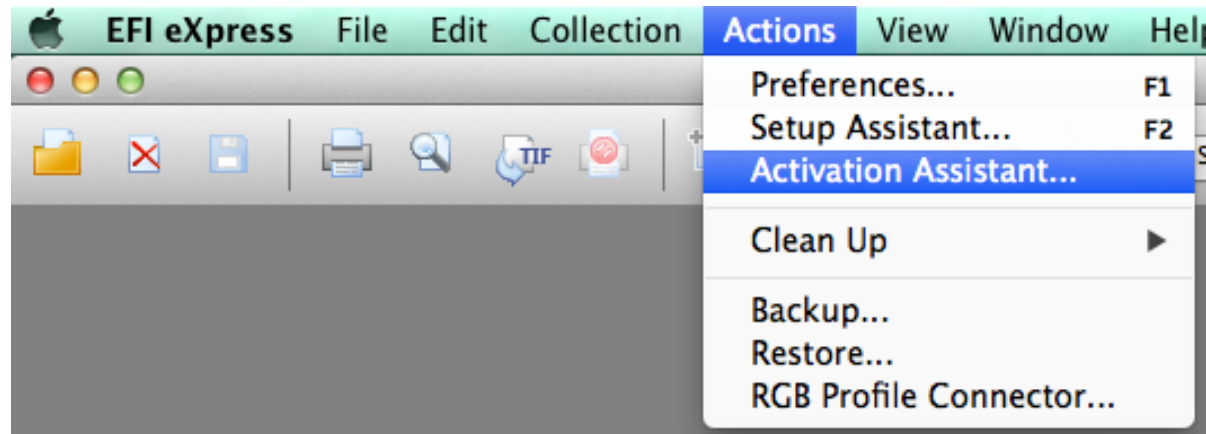
Proceed with the steps as described in the next sections
Activate Fiery eXpress
+
Update your profiles online

Activate Fiery eXpress



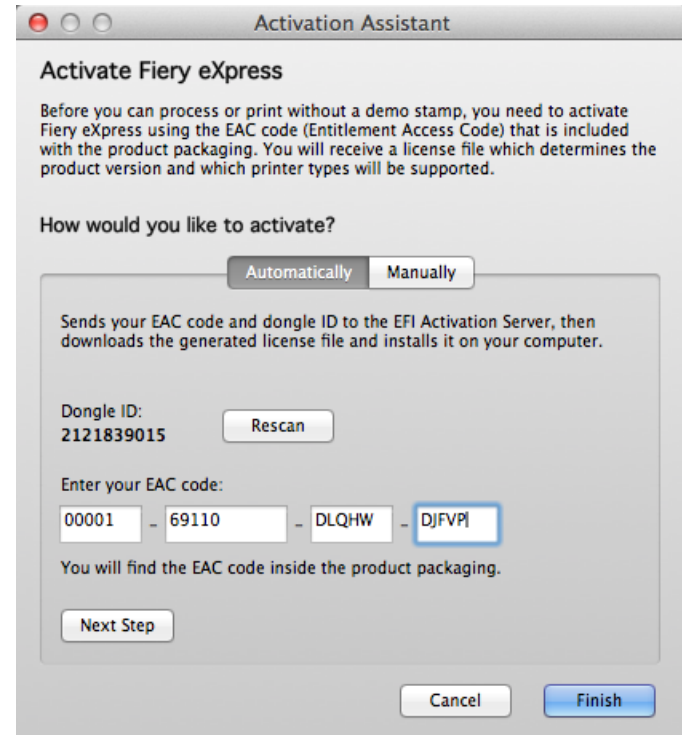
Activate Fiery eXpress

- Go to Actions > Activation Assistant...



Activate Fiery eXpress - online

- If you have access to the internet, activate eXpress **automatically** by entering your EAC code and following the instructions



The screenshot shows a window titled "Activation Assistant" with the following content:

Activate Fiery eXpress

Before you can process or print without a demo stamp, you need to activate Fiery eXpress using the EAC code (Entitlement Access Code) that is included with the product packaging. You will receive a license file which determines the product version and which printer types will be supported.

How would you like to activate?

Automatically Manually

Sends your EAC code and dongle ID to the EFI Activation Server, then downloads the generated license file and installs it on your computer.

Dongle ID: 2121839015

Enter your EAC code:

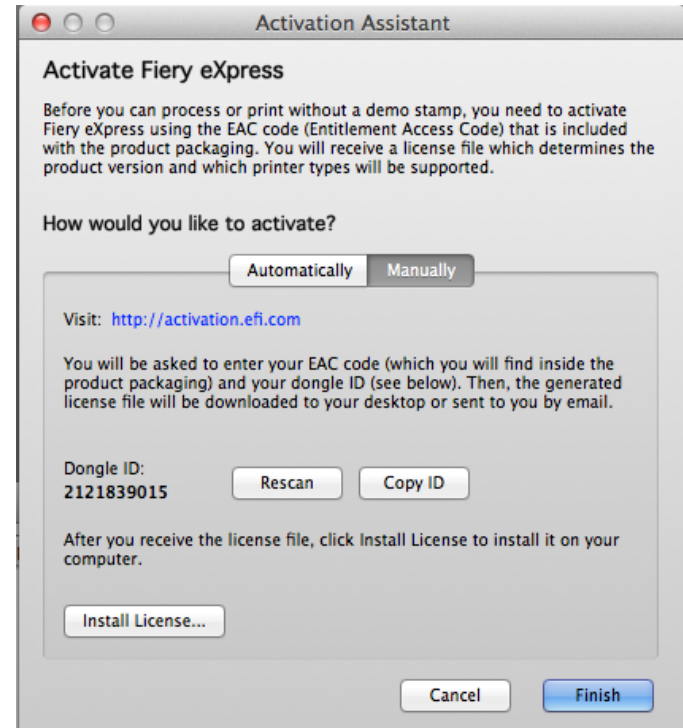
00001 - 69110 - DLQHW - DJFVPI

You will find the EAC code inside the product packaging.

Activate Fiery eXpress - offline

Alternatively, you can choose to activate manually

- Use a computer with internet access
- Go to activation.efi.com
- Enter the EAC code
- Follow the instructions until you are able to save the license file
- Go back to the computer where Fiery eXpress is installed
- Go to Activation Assistant
- Click Manually
- Click Install License
- Browse for the .lic file
- Click Finish

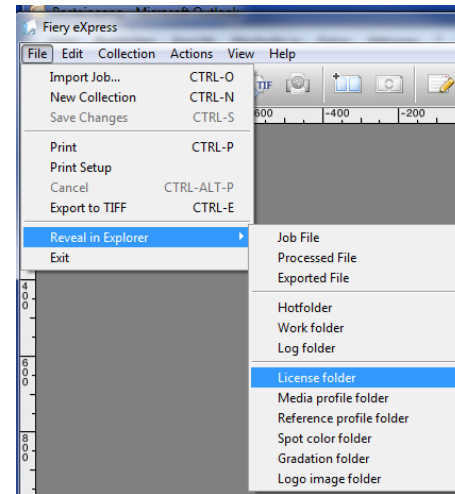
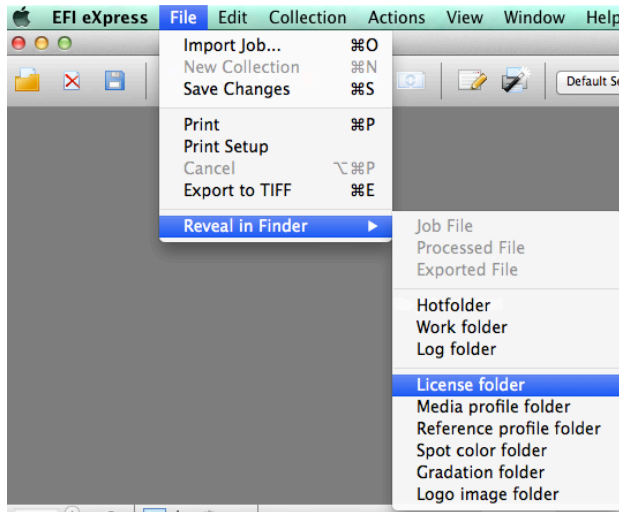


Important note

If you are installing an upgrade license, make sure that your old license is installed using the same dongle

Mac: Go to File > Reveal in Finder > License folder

Win: Go to File > Reveal in Explorer > License folder

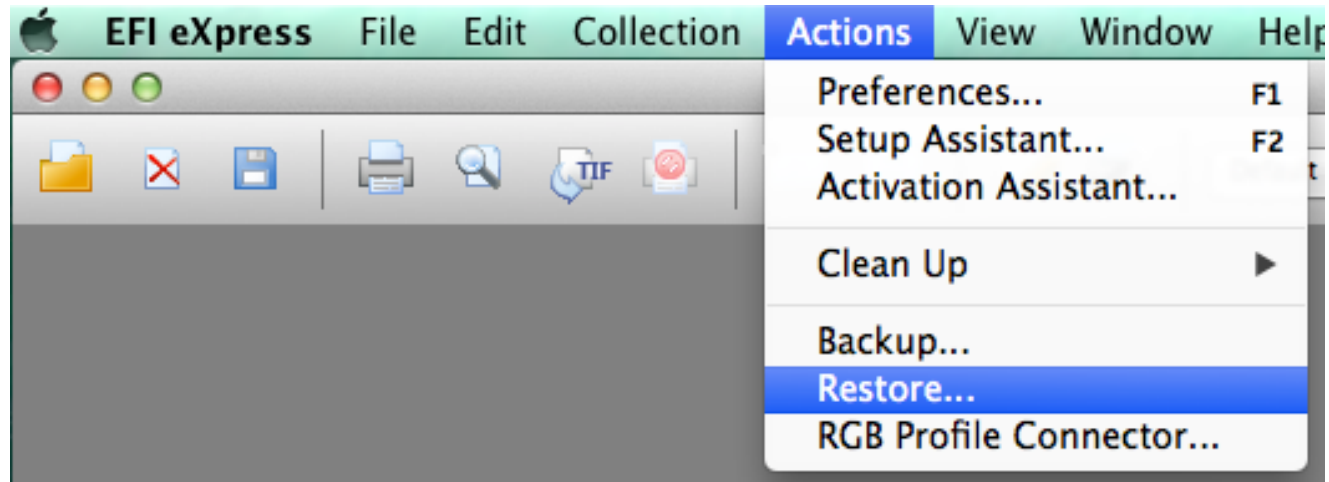


Restore your backup



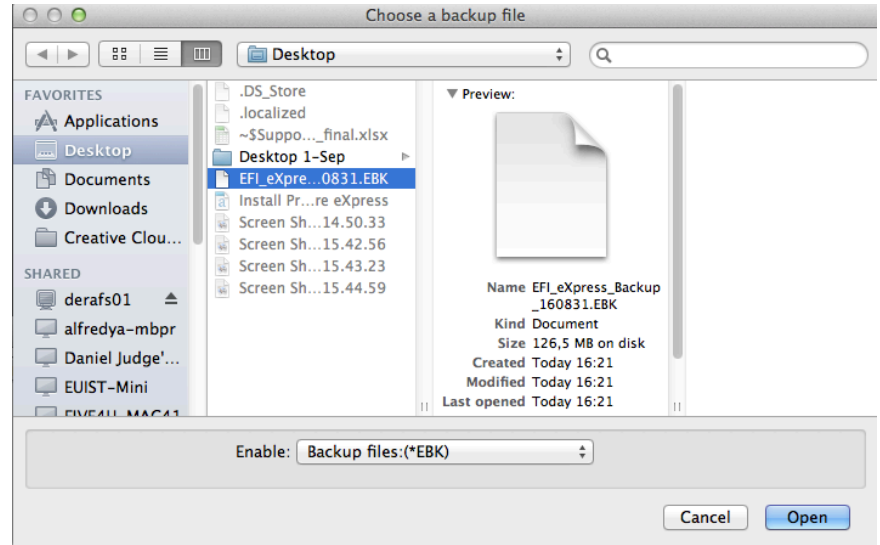
Restore your backup

- To restore the Backup file:
go to **Actions** menu > select *Restore*



Restore your backup

- Select the Backup file that you saved from your previous Fiery eXpress version
- Click “Open”

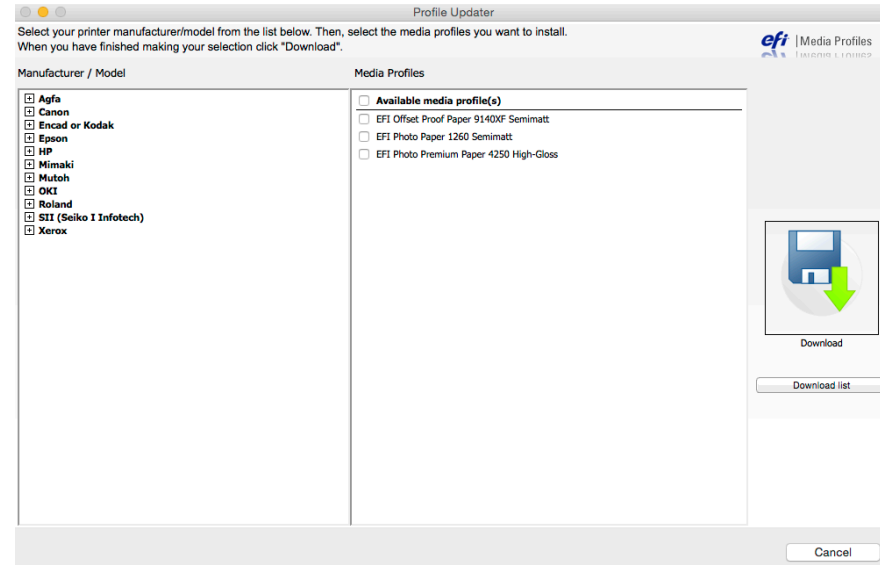


Downloading profiles online



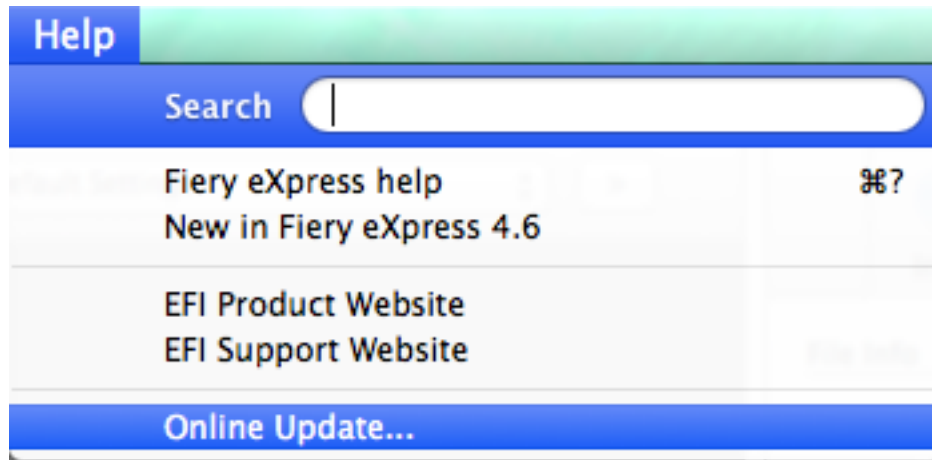
Downloading profiles online

- When to use?
 - If no media profiles are available for the printer model after installation of Fiery eXpress 4.6
 - To check for additional media profiles available



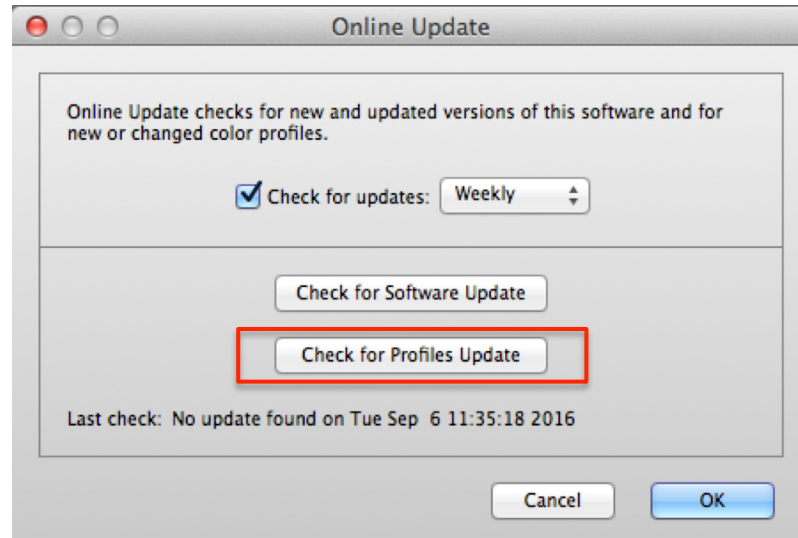
Downloading profiles online

- Go to Help > Online Update ...



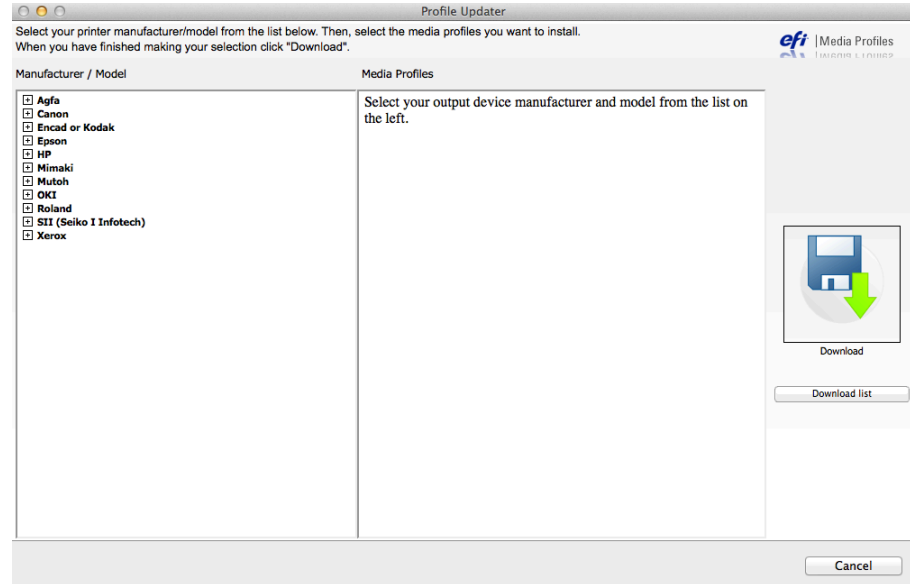
Downloading profiles online

- Click “Check for Profiles Update”



Downloading profiles online

- Choose the Manufacturer and Model of the printer and on the right-hand column, select the media profiles you wish to download

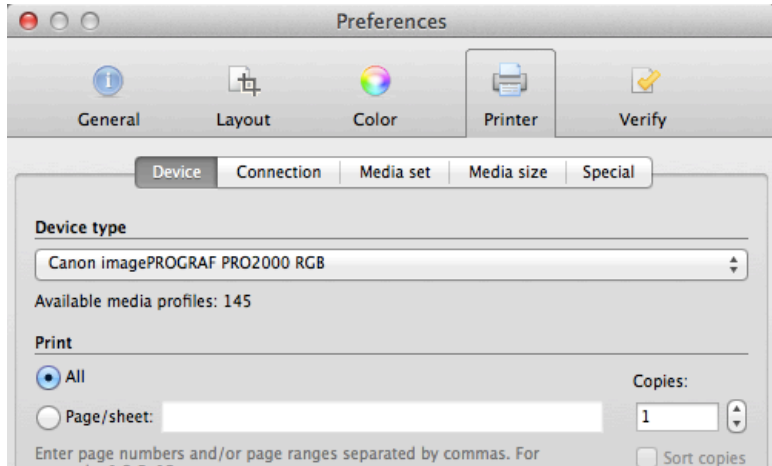


Downloading RGB Media Profiles for the new Canon imagePROGRAF PRO series



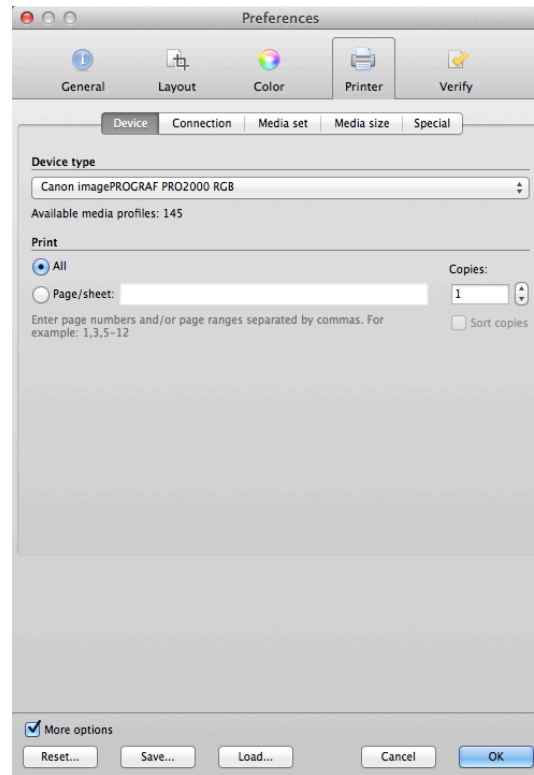
Downloading Canon RGB Media Profiles

- A Fiery eXpress 4.6 user can easily download any available RGB Media Profile for Canon media when running an imagePROGRAF PRO (using the RGB driver while connected to the internet)
- The following Canon imagePROGRAF PRO models are supported:
 - PRO-1000/500
 - PRO-2000 (PRO-520)
 - PRO-4000 (PRO-540)
 - PRO-4000S (PRO-540S)
 - PRO-6000S (PRO-560S)



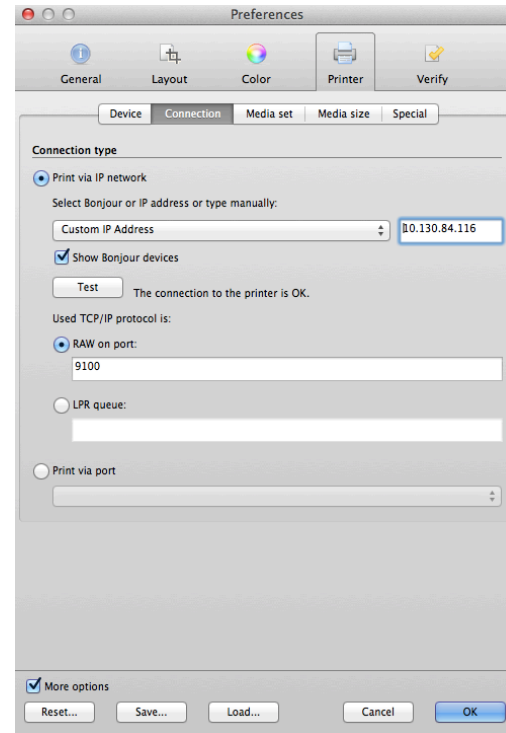
Downloading Canon RGB Media Profiles

- Select the printer model



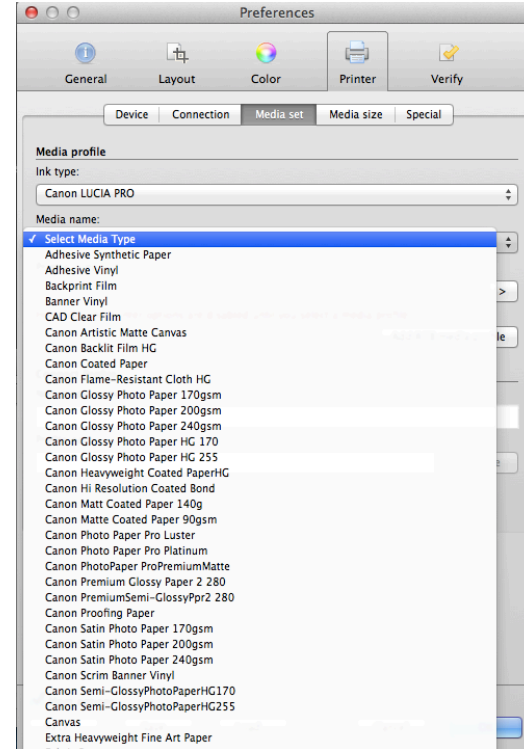
Downloading Canon RGB Media Profiles

- Go to “Connection” and enter the printer’s IP-address
- Click the “Test” button until it shows that the connection to the printer is OK



Downloading Canon RGB Media Profiles

- After a few seconds, depending on your network connection, you should be able to select any of the available media from the “Media set’ tab

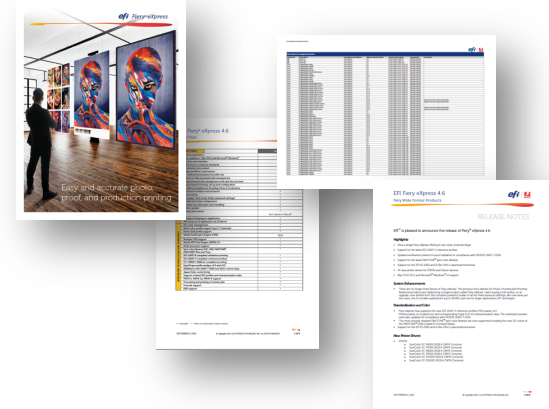


Questions?



More information

- www.efi.com/fieryexpress
 - Brochure
 - Feature Chart
 - Supported Printer List
 - Release Notes
- Please check the documentation
- Contact your Certified Fiery Wide Format Dealer
- Contact Support at fierywideformatsupport@efi.com



Thank you